



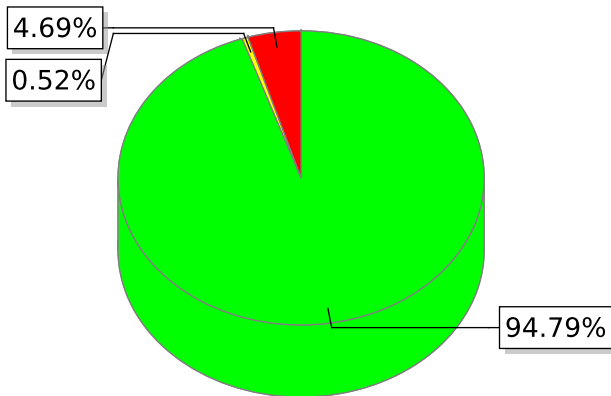
PLANT HEALTH MONITORING

Crop: **Strawberry**
Growing Stage: **90 Day**

PEST ANALYSIS

Field area: **1.92 Hectare**
Analysis name: **NIMITZ TRT**

STRESS LEVEL TABLE



| Stress level | % | Hectare |
|---|--------|---------|
| ● Fine | 94.79% | 1.82 |
| ● Medium | 0.52% | 0.01 |
| ● Pest Stress | 4.69% | 0.09 |

Total PEST STRESS Area:

0.1 ha = 5% field



Plant Health Monitoring

helps growers detect stress early, easily evaluate the extent of the damage and make more informed decisions about treatment



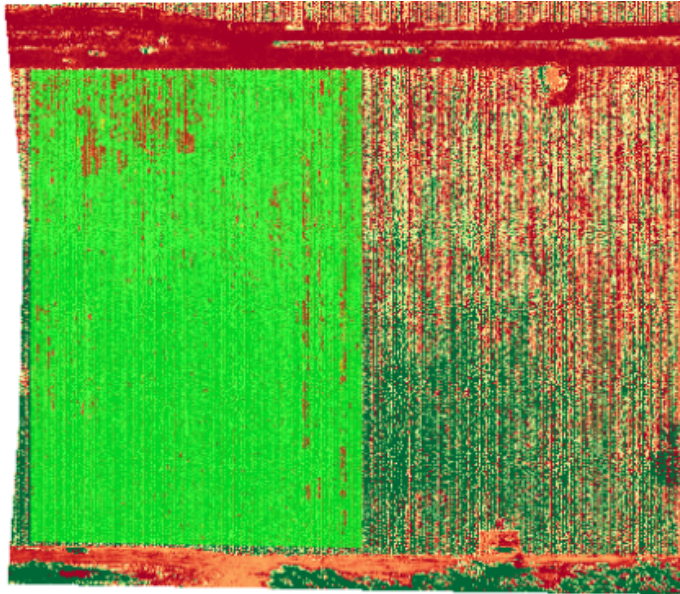
PLANT HEALTH MONITORING

PEST ANALYSIS

Crop: **Strawberry**
Growing Stage: **90 Day**

Field area: **1.92 Hectare**
Analysis name: **NIMITZ TRT**

Result Map



Location Map

