

farm front field pine tree count - February 8, 2018

Review key highlights from your latest aerial flight. Quickly review flight layers, comparisons and core observations. For additional flight details and analysis login to your account.

Flight Snapshots

Allows quick comparison of all layers produced by your flight

RGB



RGB

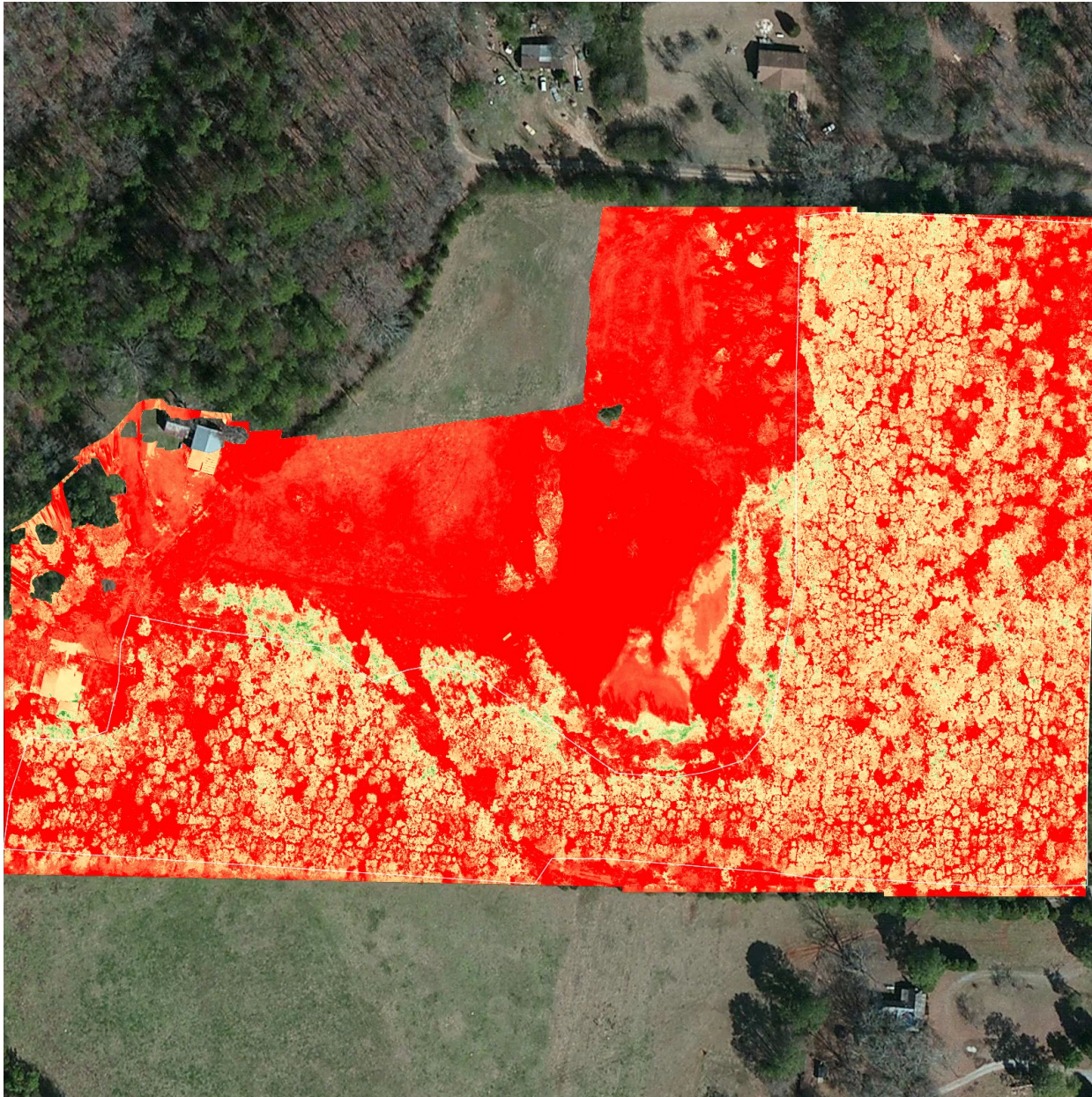
What does this show?

A traditional visible spectrum of red, green and blue used to capture high resolution imagery.

Why is it valuable?

RGB provides high resolution imagery allowing you to view flight areas with detailed granularity and clarity.

Green Intensity - Full



Green Intensity

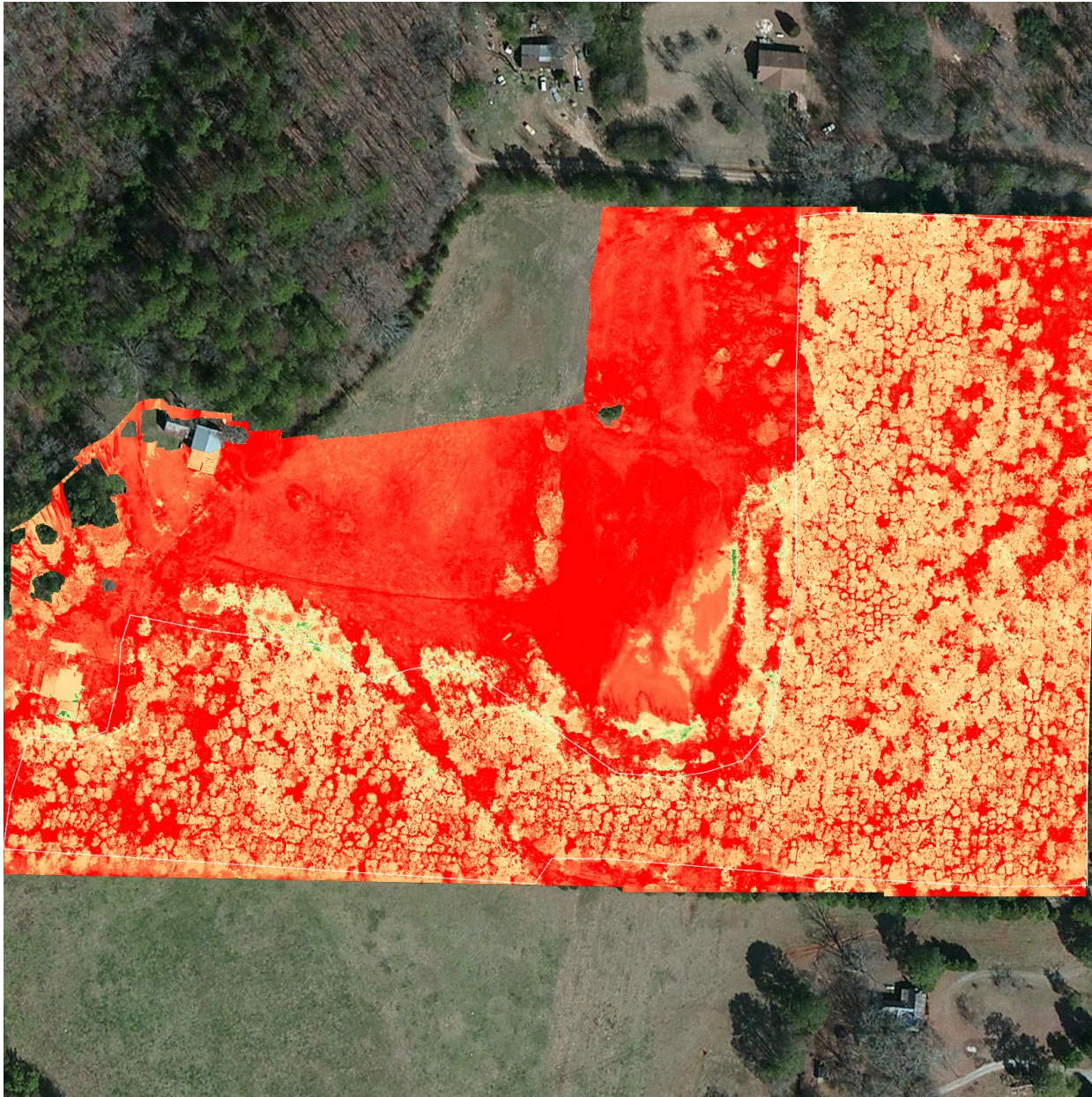
What does this show?

A colorized rendering of a traditional RGB image, focusing on a normalized green color spectrum.

Why is it valuable?

Highlights color variability to identify instances of plant inconsistency, density variation or stress.

Vegetation Intensity (VARI)



Vegetation Intensity (VARI)

What does this show?

VARI introduces atmospheric correction and estimates the vegetation fraction from the visible range of a spectrum.

Why is it valuable?

VARI is typically designed to emphasize vegetation in the visible portion of the spectrum, while mitigating illumination differences and atmospheric effects.

Flight Comparison

Move slider to see visual comparisons between flights.

Satellite

RGB - 2/8/18





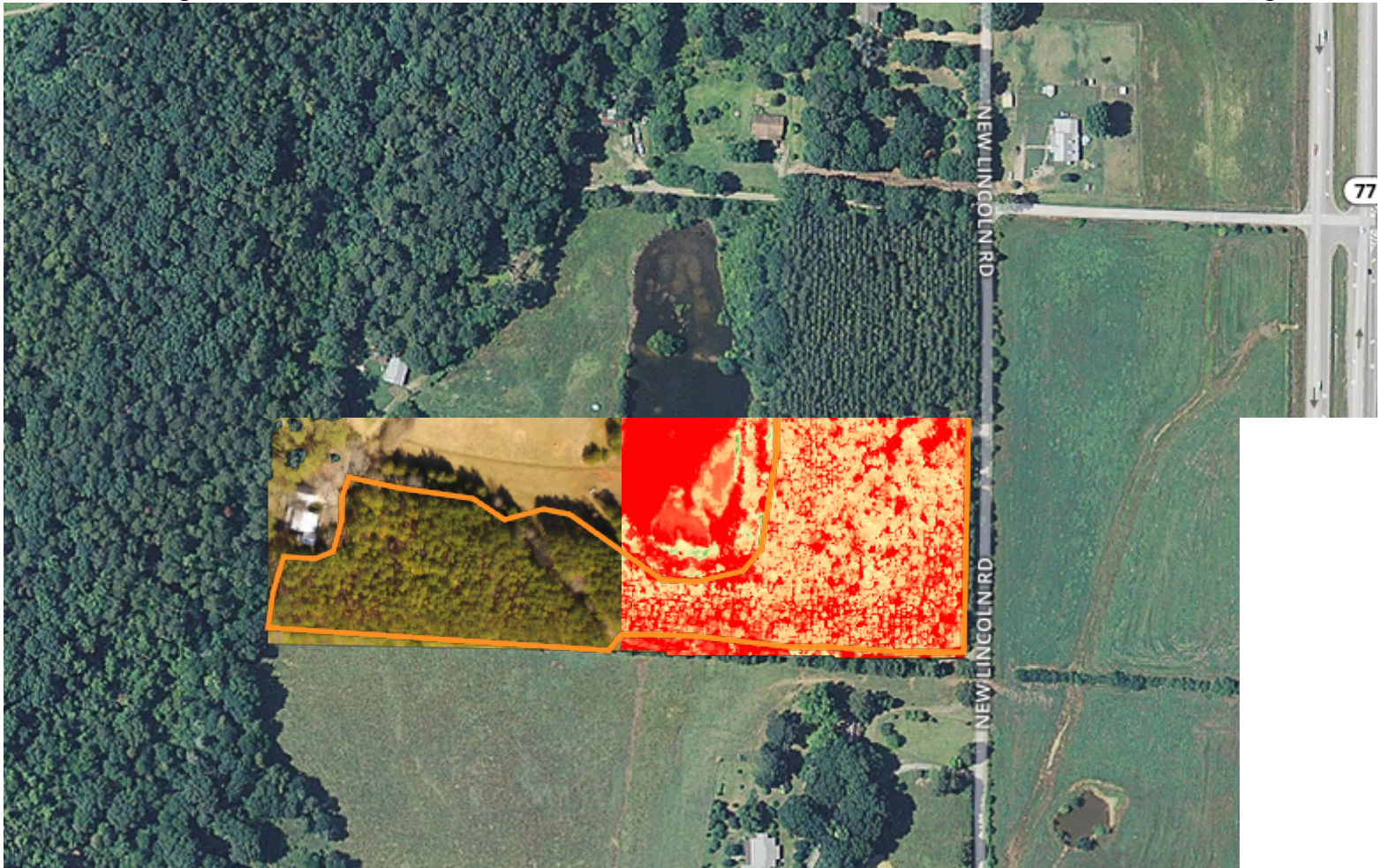
Index Comparison

Allows quick comparison of indexes created with data gathered from this flight.

RGB - 2/8/18

Green Intensity - Full - 2/8/18





Action Items & Annotations

Provides a quick glance at annotations and action items.

Feb 8, 2018 @ 12:11 AM by null null in Other

1 shape



Feb 8, 2018 @ 12:11 AM by null null in Other

1 shape

10.28 ac



Feb 8, 2018 @ 12:11 AM by null null in Other

1 shape



Feb 8, 2018 @ 12:11 AM by null null in Other

1 shape



Analysis Region Progress

Provides a quick glance at the key areas on your property and their indicators.

Selected Feature Type:

Watch Area

Selected Features:

WA1, WA2, WA3

Selected Findings:

Green Intensity - High Vigor, Green Intensity - Low Vigor

Region Overview



Watch Area: WA1 (WA1)

Area: 2.55 ac

Perimeter: 445.83 yd

Shapes: 1

WA1



Watch Area: WA2 (WA2)

Area: 2.4 ac

Perimeter: 432.73 yd

Shapes: 1

WA2



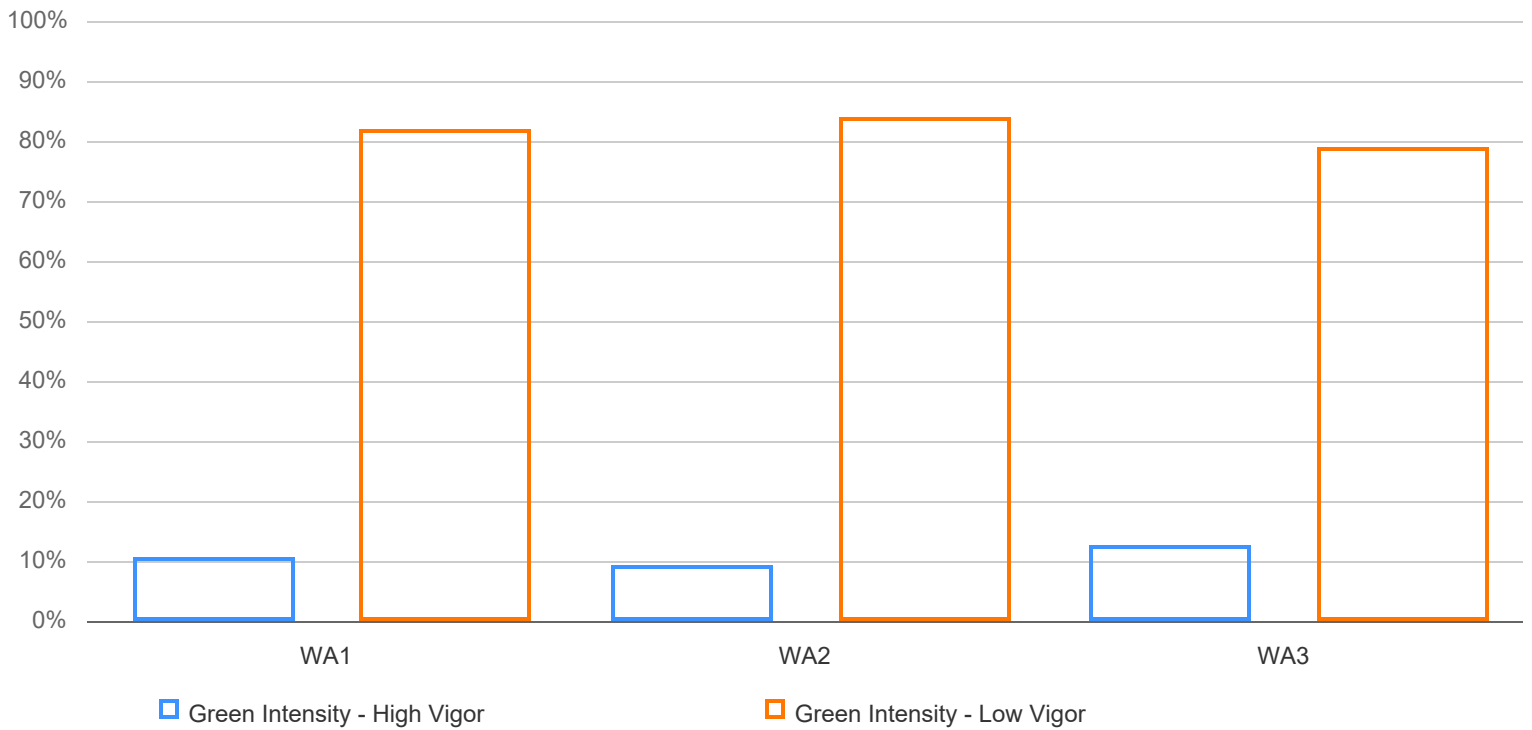
Watch Area: WA3 (WA3)

Area: 2.12 ac

Perimeter: 404.04 yd

Shapes: 1

WA3



Findings

RGB, Green Intensity - Full, Vegetation Intensity (VARI)

Current Flight:

Feb 8, 2018

about:blank

Selected Feature Types:

Chemistry, Crop Type, Crop Type 2, Crop Type 3, Document Event Zone, Equipment, Irrigation_Items_Zone, Irrigation

**Finding Coverage:0% -
100%**

Watch Area

Watch Area - WA1 2.55 ac

Condition	2/08/2018	Related Actions
Green Intensity - High Vigor	0.27 ac 10% coverage	
Green Intensity - Low Vigor	2.09 ac 82% coverage	

Watch Area - WA2 2.4 ac

Condition	2/08/2018	Related Actions
Green Intensity - Low Vigor	2.02 ac 84% coverage	
Green Intensity - High Vigor	0.23 ac 9% coverage	

Watch Area - WA3 2.12 ac

Condition	2/08/2018	Related Actions
Green Intensity - High Vigor	0.27 ac 12% coverage	
Green Intensity - Low Vigor	1.68 ac 79% coverage	



**Review key highlights from your latest aerial flight.
Quickly review flight layers, comparisons and core**

**observations. For additional flight details and analysis
login to your account.**